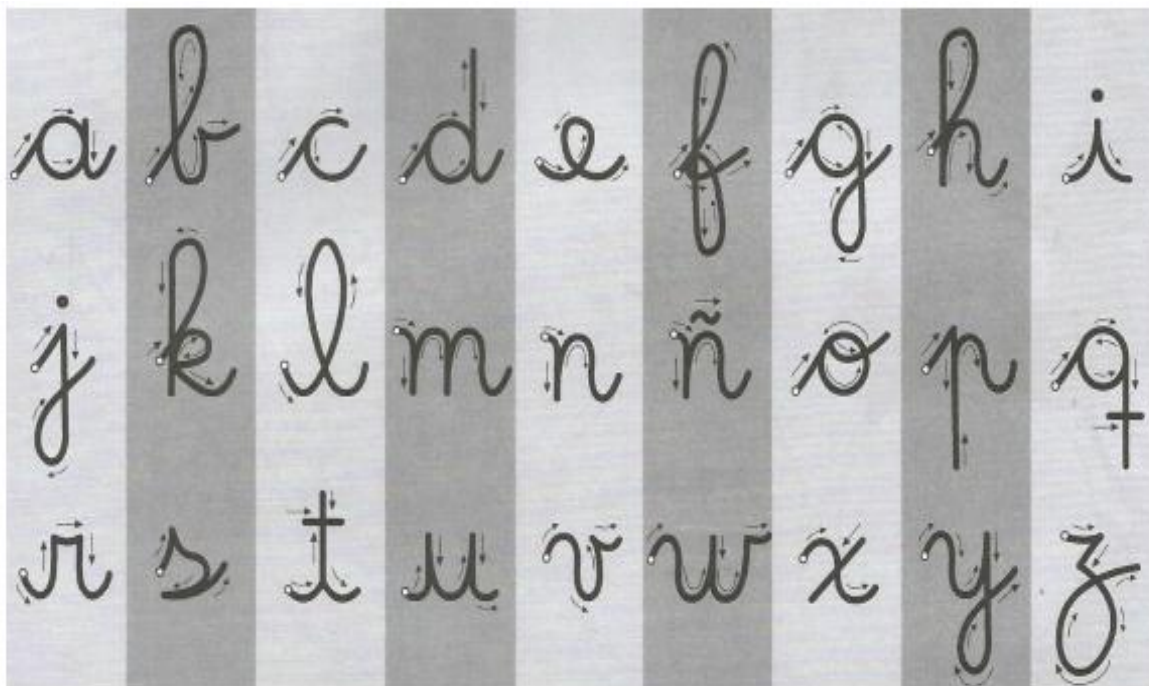


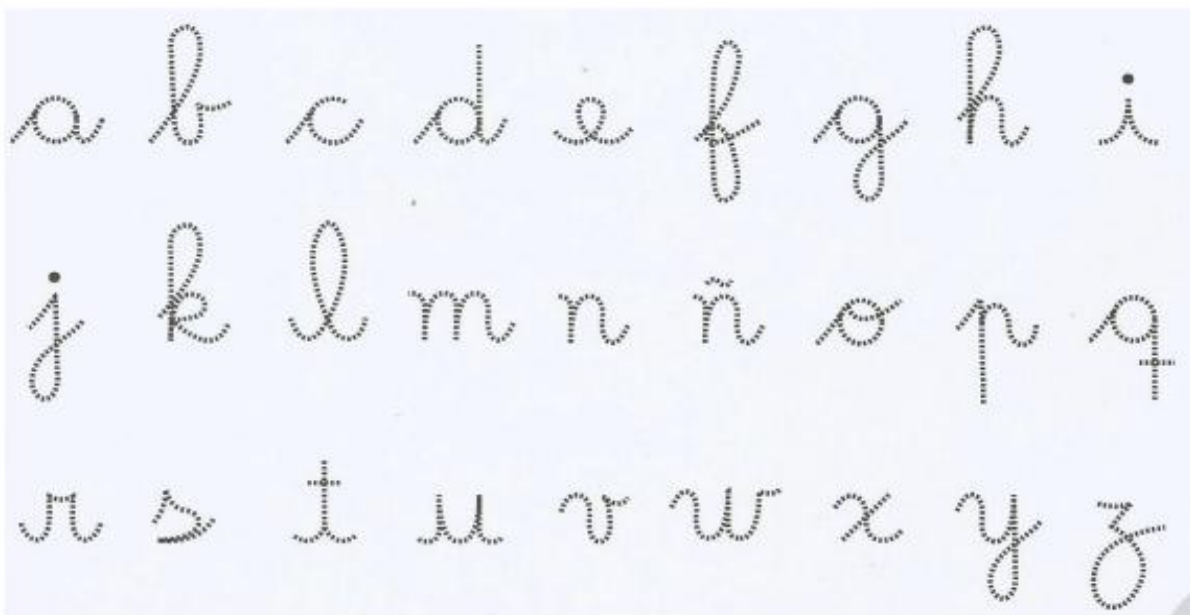
## EJERCITACIÓN PARA TRABAJAR CURSIVA.

### Minúsculas cursiva.

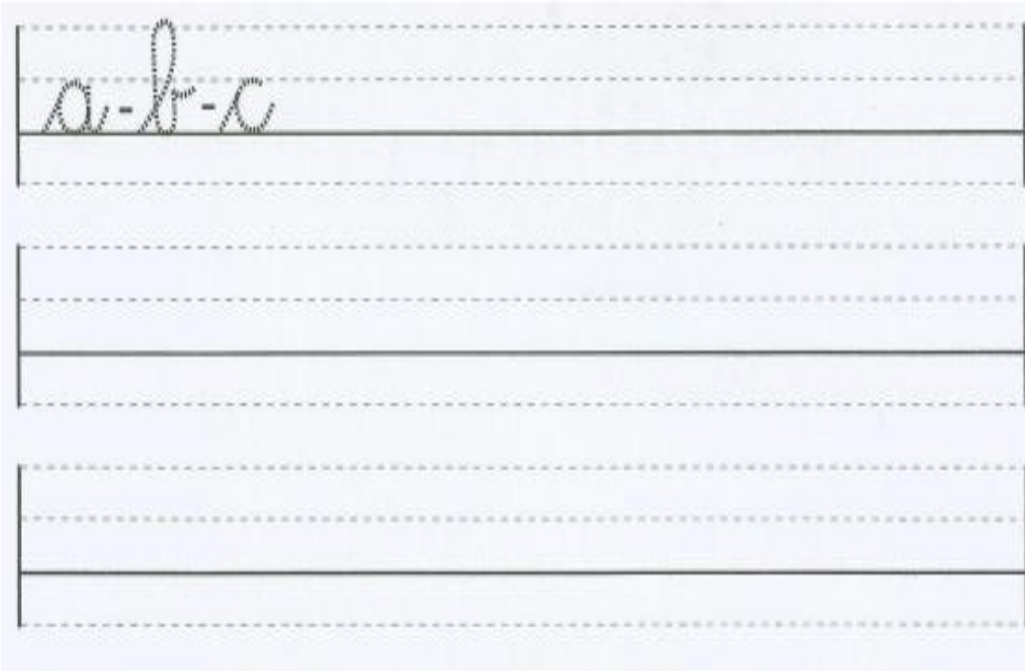
1. Verificar cómo se delinea cada una de las letras del alfabeto. Recuerda que esta es la dirección correcta para trazar cada letra.



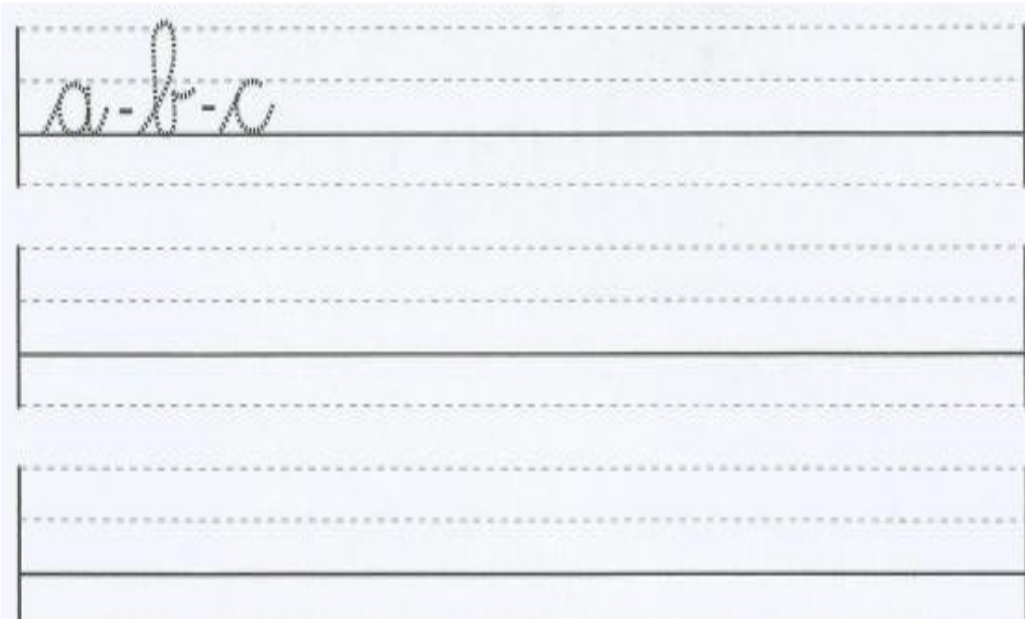
2. Ahora, delinear cada letra.



3. Copiar el abecedario en letra minúscula cursiva en los siguientes renglones.

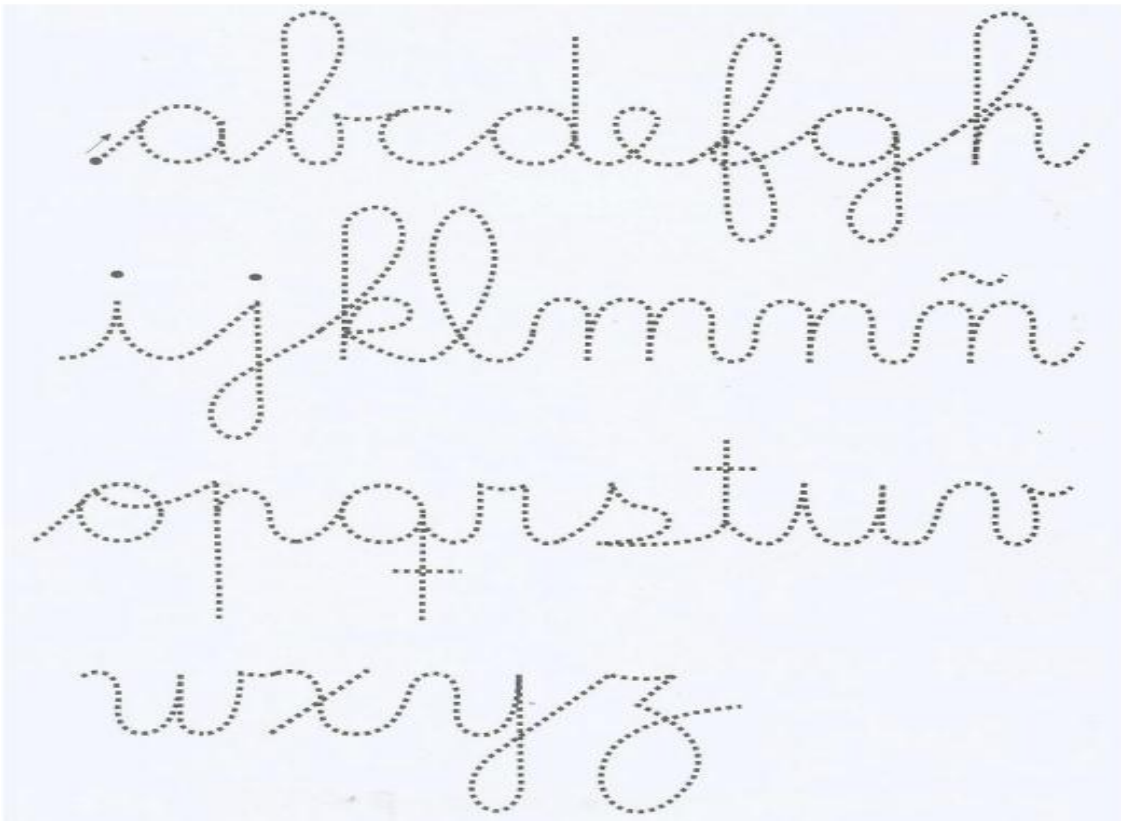


Handwriting practice lines. The first line contains the cursive letters 'a', 'b', and 'c' written in a light blue color. The letters are connected by a dashed line. Below this line are two more empty lines for practice, each with a solid top line, a dashed middle line, and a solid bottom line.



Handwriting practice lines. The first line contains the cursive letters 'a', 'b', and 'c' written in a light blue color. The letters are connected by a dashed line. Below this line are two more empty lines for practice, each with a solid top line, a dashed middle line, and a solid bottom line.

4. Delinear con un color distinto cada letra.



**Mayúsculas cursiva.**

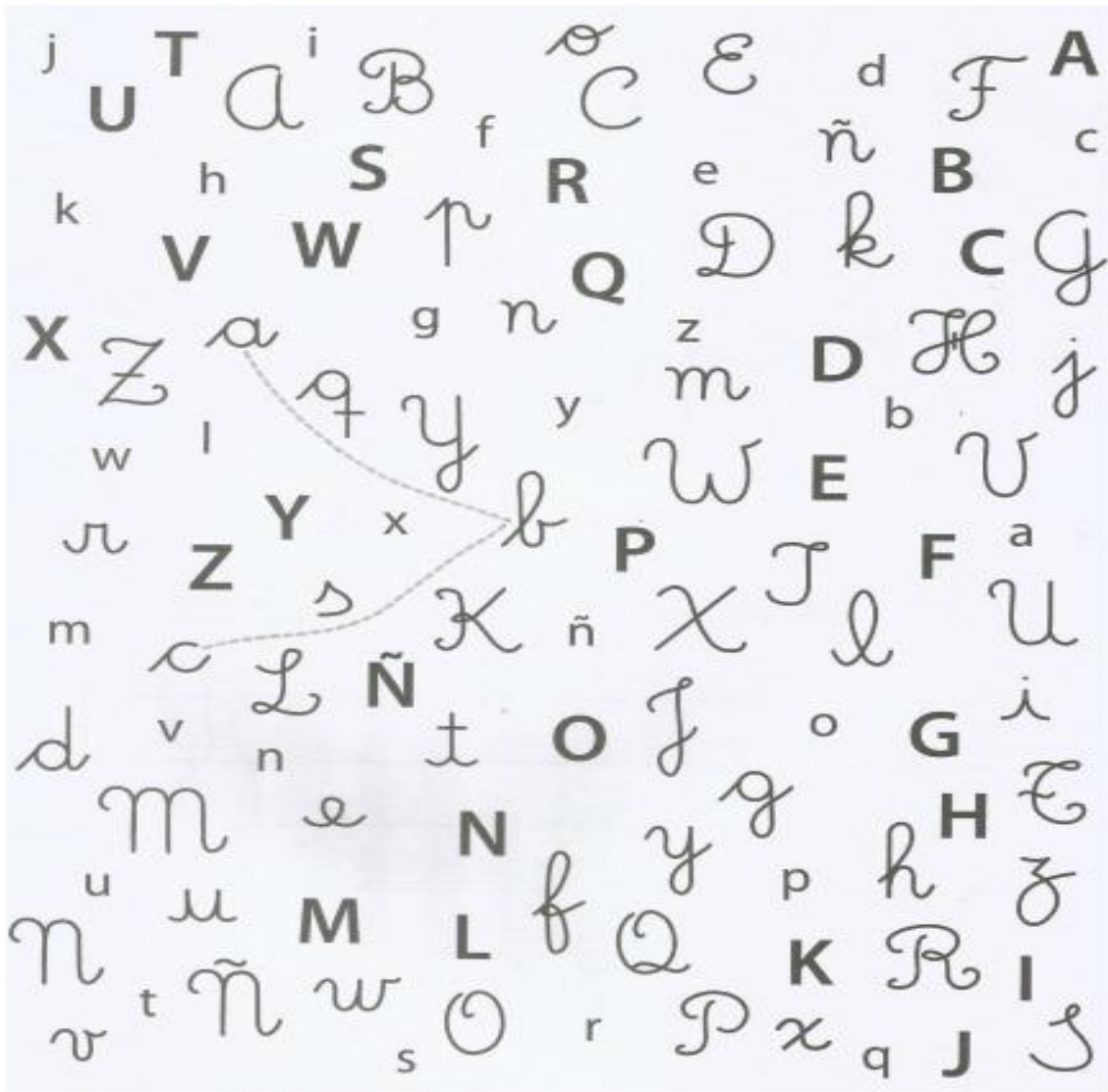


5. Completar el abecedario en letra cursiva mayúscula.

A handwriting practice box with a light blue background. It contains three horizontal rectangular lines. The top line is pre-filled with the cursive letters 'A' and 'B' followed by a hyphen. The middle and bottom lines are empty for practice.

A second handwriting practice box, identical in format to the first one. It also contains three horizontal rectangular lines, with the top line pre-filled with the cursive letters 'A' and 'B' followed by a hyphen, and the middle and bottom lines empty.

6- Une las letras del abecedario teniendo en cuenta los diferentes tipos de letras. Utiliza un color distinto para cada una.



7- Lee en voz alta los siguientes trabalenguas, transcríbelos en cursiva y practica para no tener errores. En clase competimos.

Poquito a poquito

Paquito empaca

poquitas copitas

en pocos paquetes.

Paco poco a poco

pica pasas

y Peco

poco a poco

las pisa.

Si Pancha plancha

con cuatro planchas

¿con cuántas planchas

Pancha plancha?

