

Presentación

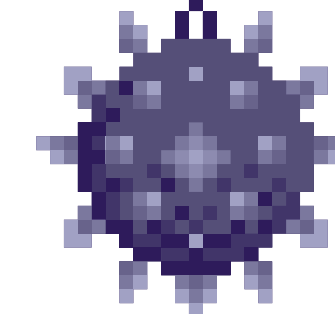
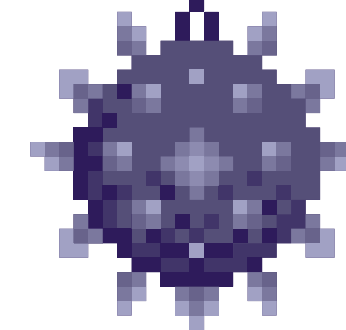
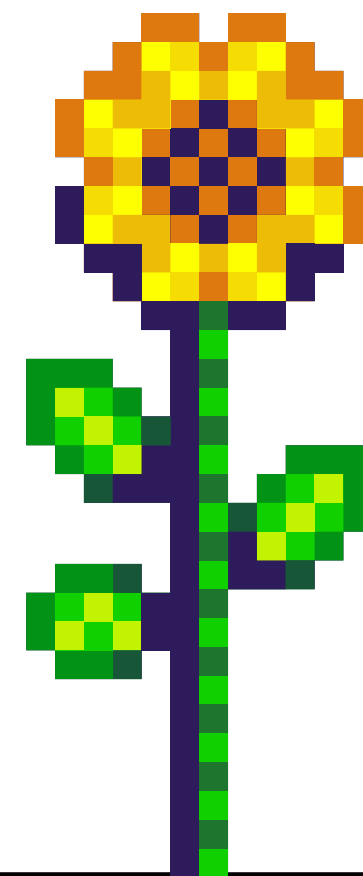
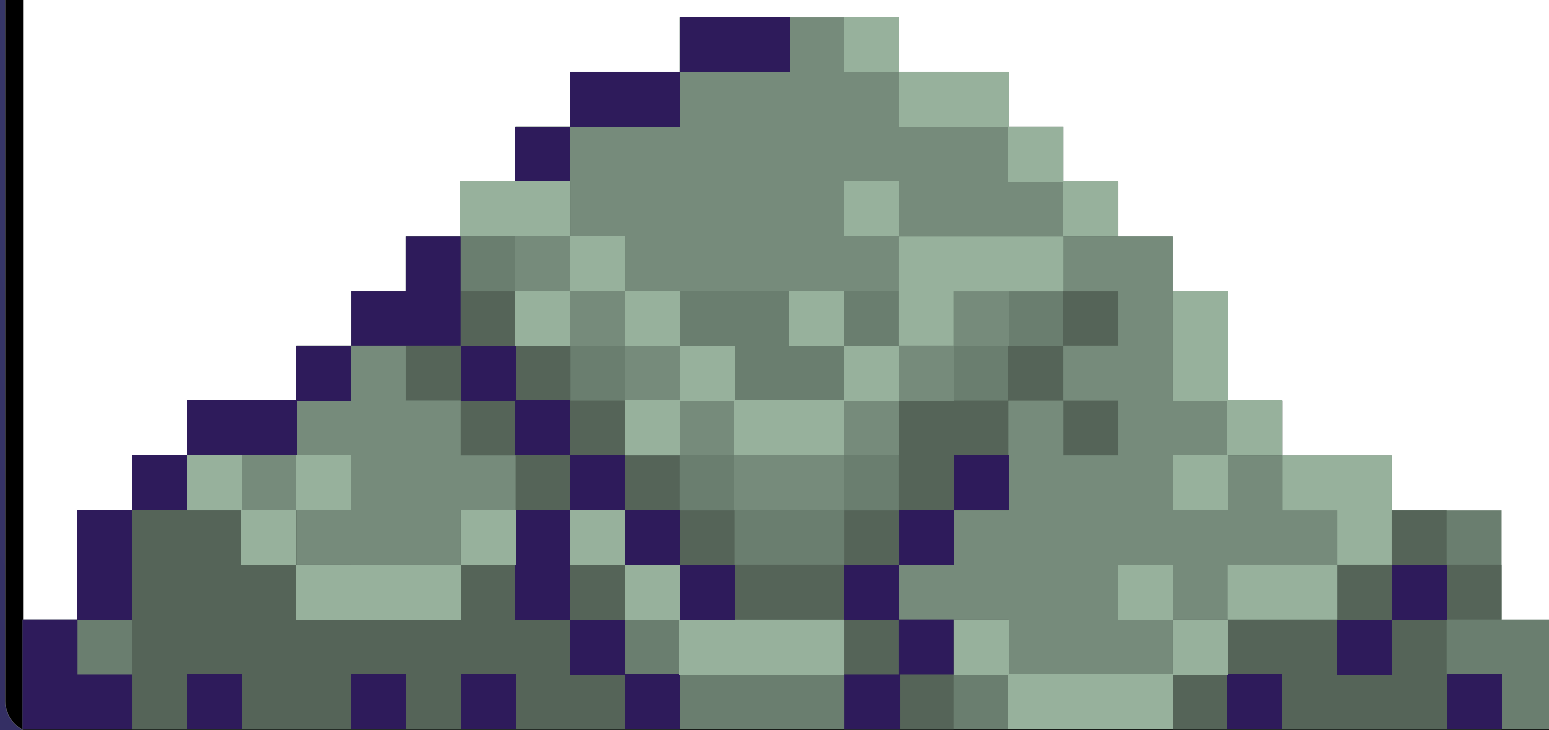
START



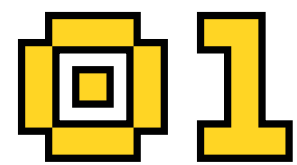


Problema

la pantera rosa quiere pintar pero el señor azul no
deja pintar a la pantera rosa



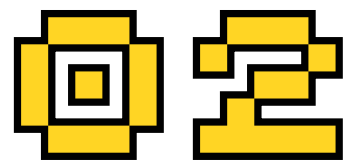
solución



1

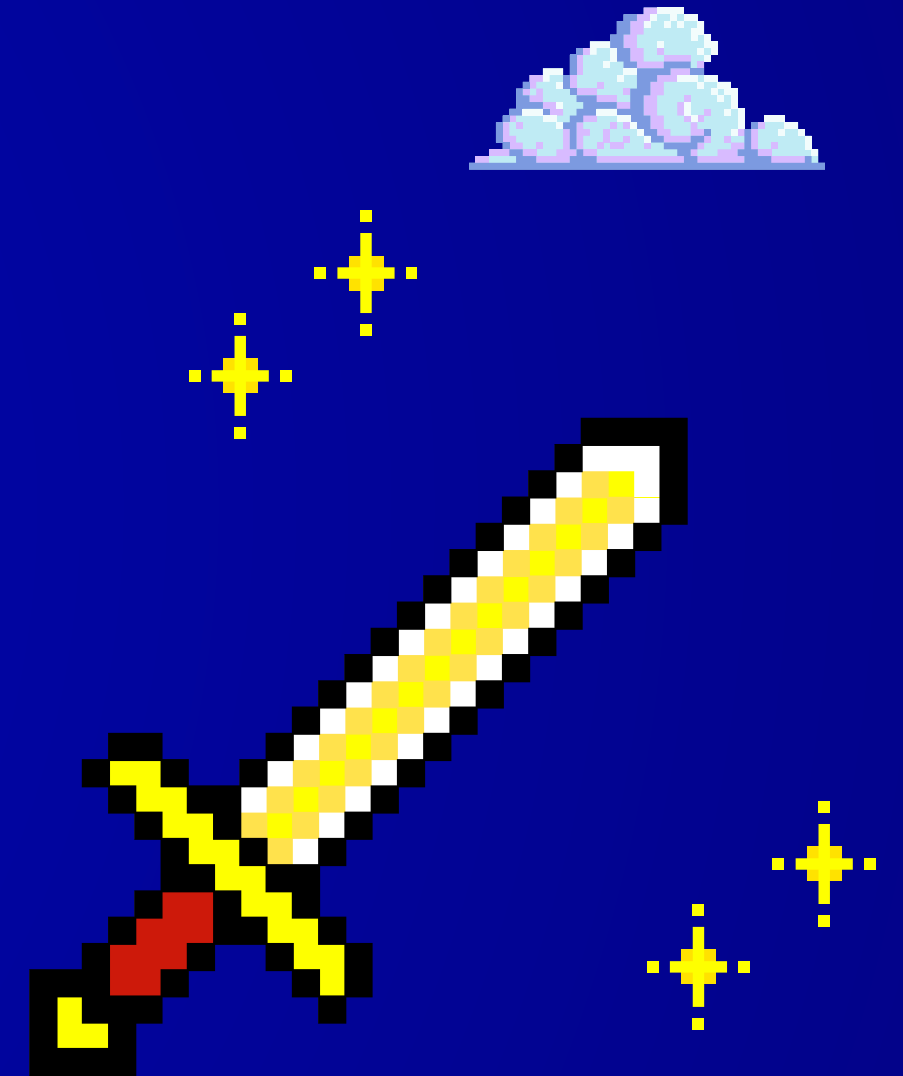
encerrar al señor en
~~una celda~~

-OX

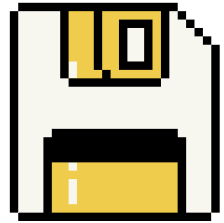


ponerse de acuerdo

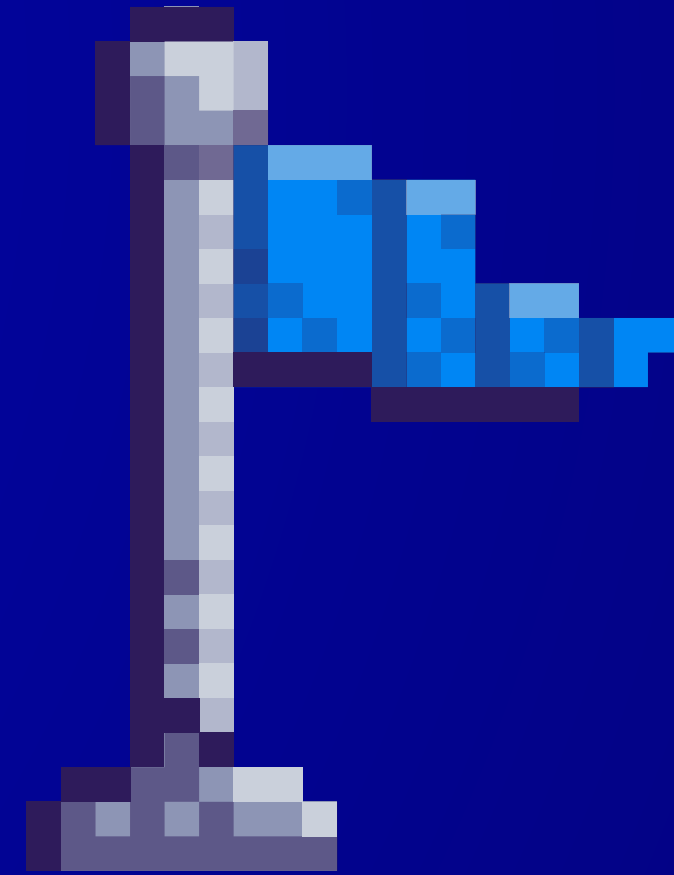
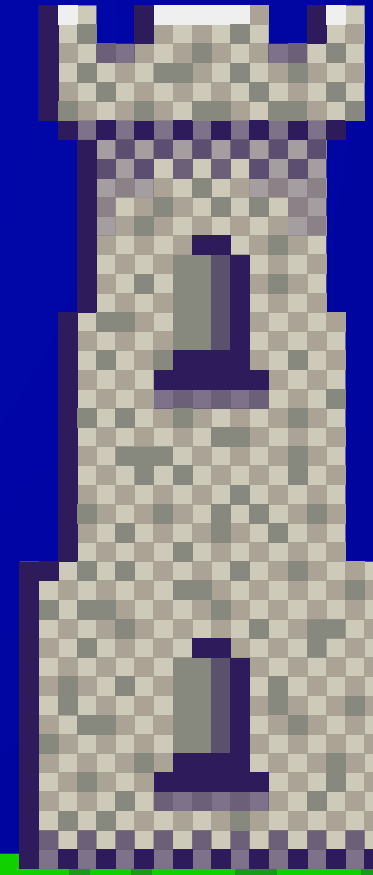
-OX



Recursos



materiales:
barrotes de hierro,
cerradura y llaves



Ejecución

- □ ×



START

