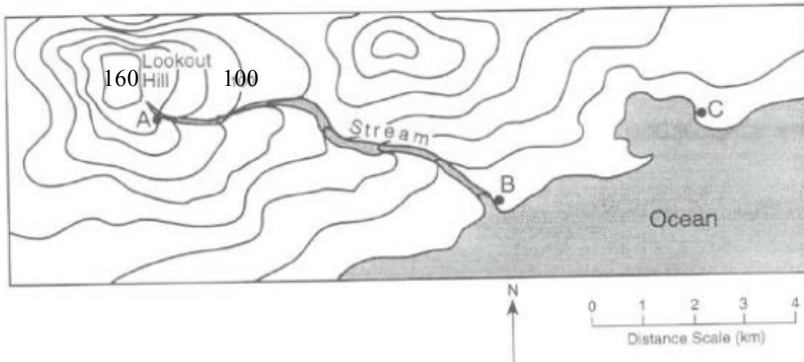


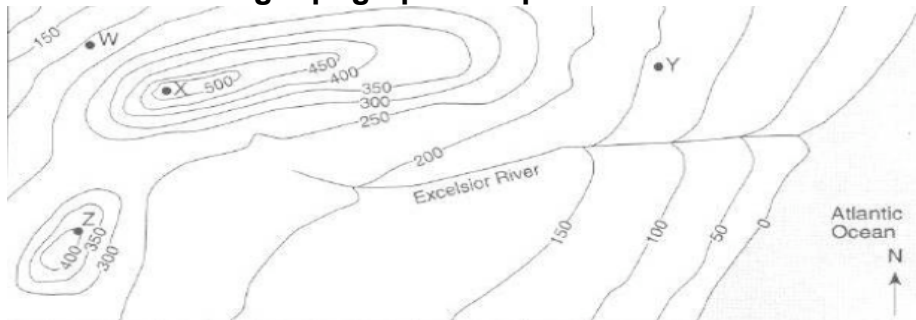
Topographic Map Worksheet

Use the following topographic map to answer 1 -3.



1. The elevation at Point A is
A 60 m **C 140 m**
B 100 m D 300 m
2. In which direction is the stream flowing?
A northwest C southwest
B northeast **D southeast**
3. Which side of Lookout Hill has the steepest slope?
A north C east
B south D west

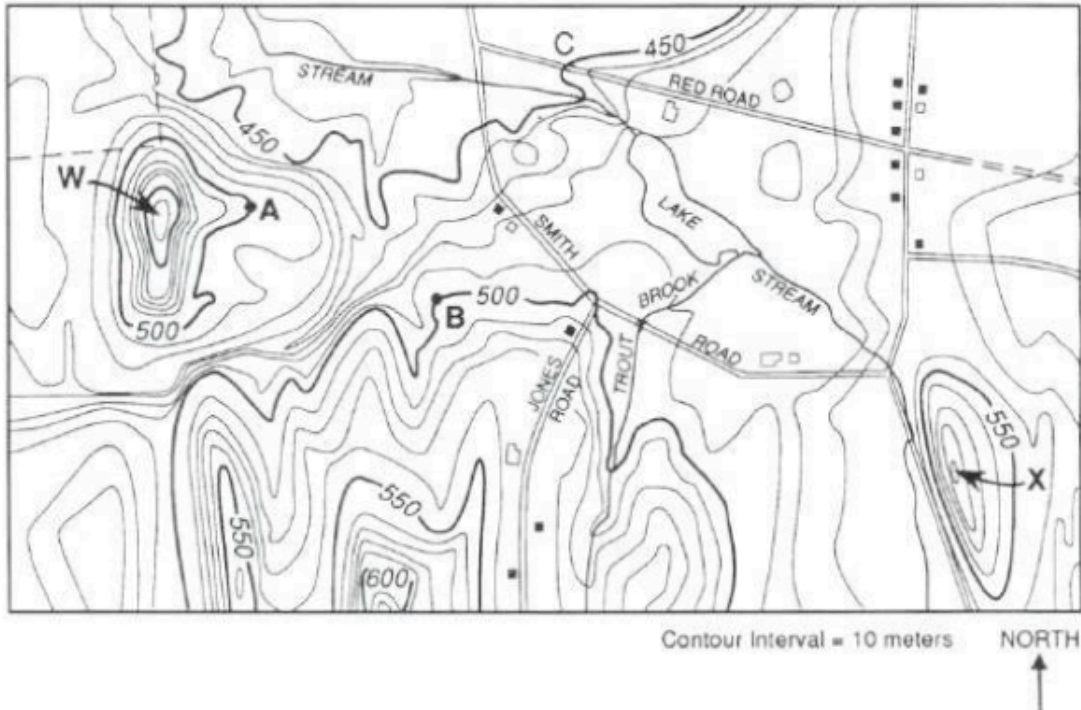
Use the following topographic map to answer 4 -7.



4. What is the approximate elevation at location Y?
A 140 m C 200 m
B 170 m D 230 m
5. What is a possible elevation at point X?
A 450 m **C 500 m**
B 700 m D 400 m
6. If a person at point W travels uphill, in which direction is the person traveling?
A northwest C southwest
B northeast **D southeast**

- _____ 7 What is the elevation difference of the entire length of the Excelsior River?
 A 0 m C 225 m
 B 200 m D 250 m

Use the following topographic map to answer 8-10.



- _____ 8. What is the elevation at the intersection of Jones Road and Smith Road?
 A 450 m C 550 m
 B 500 m D 600 m
- _____ 9. On which side of hill X is the steepest slope found?
 A north C south
 B east D west
- _____ 10. What is the contour interval on this map
 A 10 m C 50 m
 B 20 m D 100 m